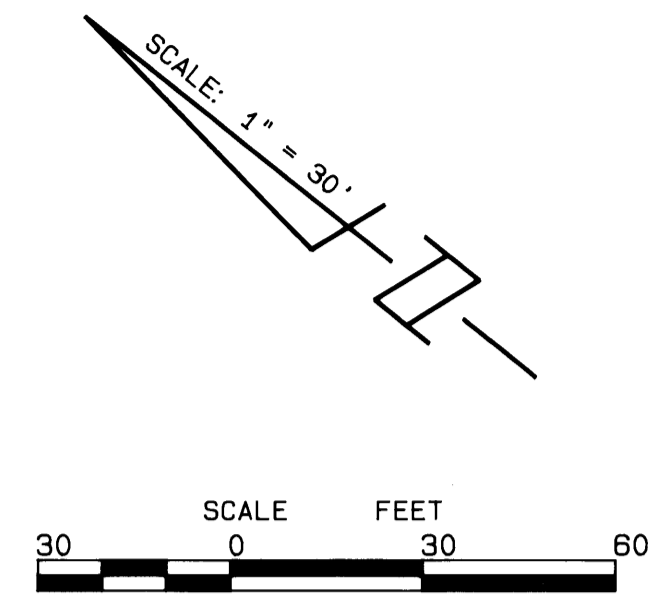


# A PLAT OF LOBLOLLY PINES - PLAT NO. 2

BEING A REPLAT OF A PORTION OF LOTS 49 AND 50  
OF "GOMEZ GRANT AND JUPITER ISLAND"  
AS RECORDED IN PLAT BOOK 1, PAGE 80  
PALM BEACH (NOW MARTIN) COUNTY, FLORIDA



JULY, 1988

I, MARSHA STILLER, CLERK OF THE CIRCUIT COURT OF MARTIN COUNTY, FLORIDA, HEREBY CERTIFY THAT THIS PLAT WAS FILED FOR RECORD IN PLAT BOOK 11, PAGE 49, MARTIN COUNTY, FLORIDA, PUBLIC RECORDS, THIS \_\_\_\_\_ DAY OF \_\_\_\_\_, 1988.

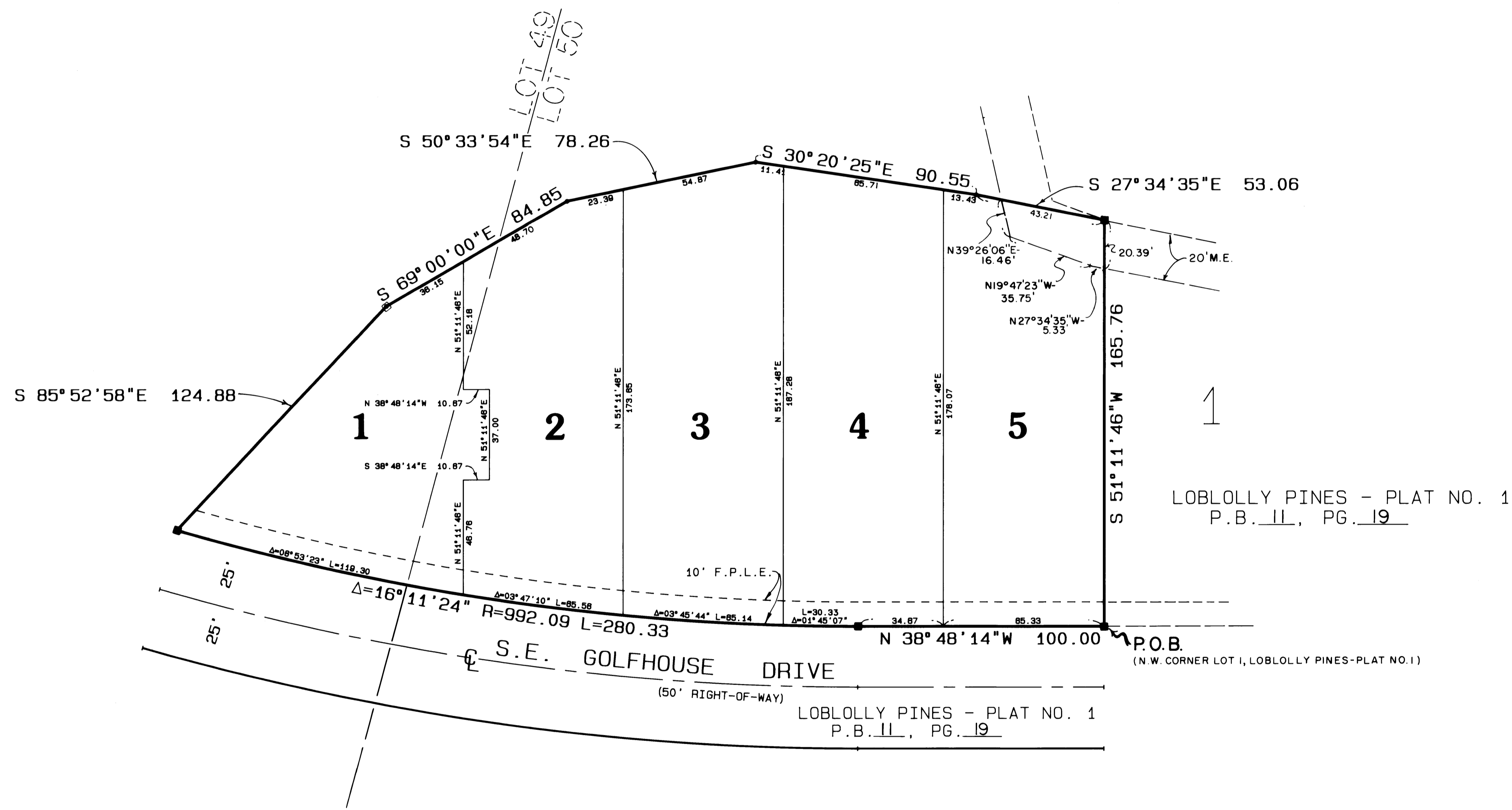
MARSHA STILLER,  
CLERK CIRCUIT COURT  
MARTIN COUNTY, FLORIDA.

BY: \_\_\_\_\_  
DEPUTY CLERK

FILE NO. \_\_\_\_\_

(CIRCUIT COURT SEAL)

BEARING BASE:  
THE WEST RIGHT-OF-WAY LINE OF FIRST AVENUE  
IS ASSUMED TO BEAR N 24°00'00"W AND ALL  
OTHER BEARINGS ARE RELATIVE THERETO.



- LEGEND
- - DENOTES P.R.M. (PERMANENT REFERENCE MONUMENT) SET
  - - DENOTES P.R.M. (PERMANENT REFERENCE MONUMENT) FOUND NO. 959
  - F.P.L.E. - DENOTES FLORIDA POWER & LIGHT UTILITY EASEMENT
  - M.E. - DENOTES MAINTENANCE EASEMENT

NOTE: THERE SHALL BE NO LOT SPLITS EXCEPT TO  
CREATE LARGER LOTS.

LINDAHL BROWNING FERRARI & HELLSTROM, INC. CONSULTING ENGINEERS, PLANNERS & SURVEYORS	
220 BOX 227 JUPITER, FLORIDA 33468	90 CENTRAL PARKWAY SUITE 400 STUART, FLORIDA 34994
1905 SOUTH 25TH STREET SUITE 200 FORT PIERCE, FLORIDA 34946	
2	2